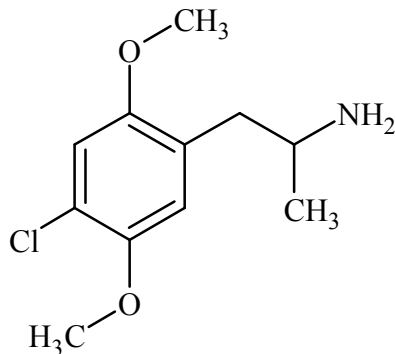




## 4-Chloro-2,5-Dimethoxyamphetamine

The Drug Enforcement Administration's Special Testing and Research Laboratory generated this monograph using structurally confirmed reference material.



### 1. GENERAL INFORMATION

<b>IUPAC Name:</b>	1-(4-chloro-2,5-dimethoxyphenyl)propan-2-amine
<b>CAS#:</b>	123431-31-2 (base), 42203-77-0 (HCl)
<b>Synonyms:</b>	DOC, 4-Cl-2,5-DMA, 2,5-dimethoxy-4-chloroamphetamine
<b>Source:</b>	DEA Reference Material Collection
<b>Appearance:</b>	White powder
<b>UV<sub>max</sub> (nm):</b>	Not Determined

### 2. CHEMICAL AND PHYSICAL DATA

#### 2.1 CHEMICAL DATA

Form	Chemical Formula	Molecular Weight	Melting Point (°C)
Base	C <sub>11</sub> H <sub>16</sub> ClNO <sub>2</sub>	229	Not Determined
HCl	C <sub>11</sub> H <sub>16</sub> ClNO <sub>2</sub> · HCl	266	194.6



## 4-Chloro-2,5-Dimethoxyamphetamine

The Drug Enforcement Administration's Special Testing and Research Laboratory generated this monograph using structurally confirmed reference material.



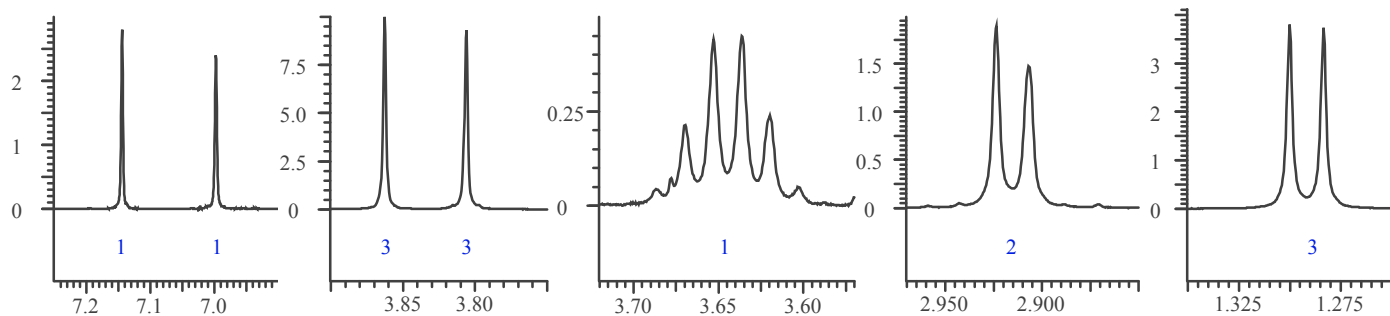
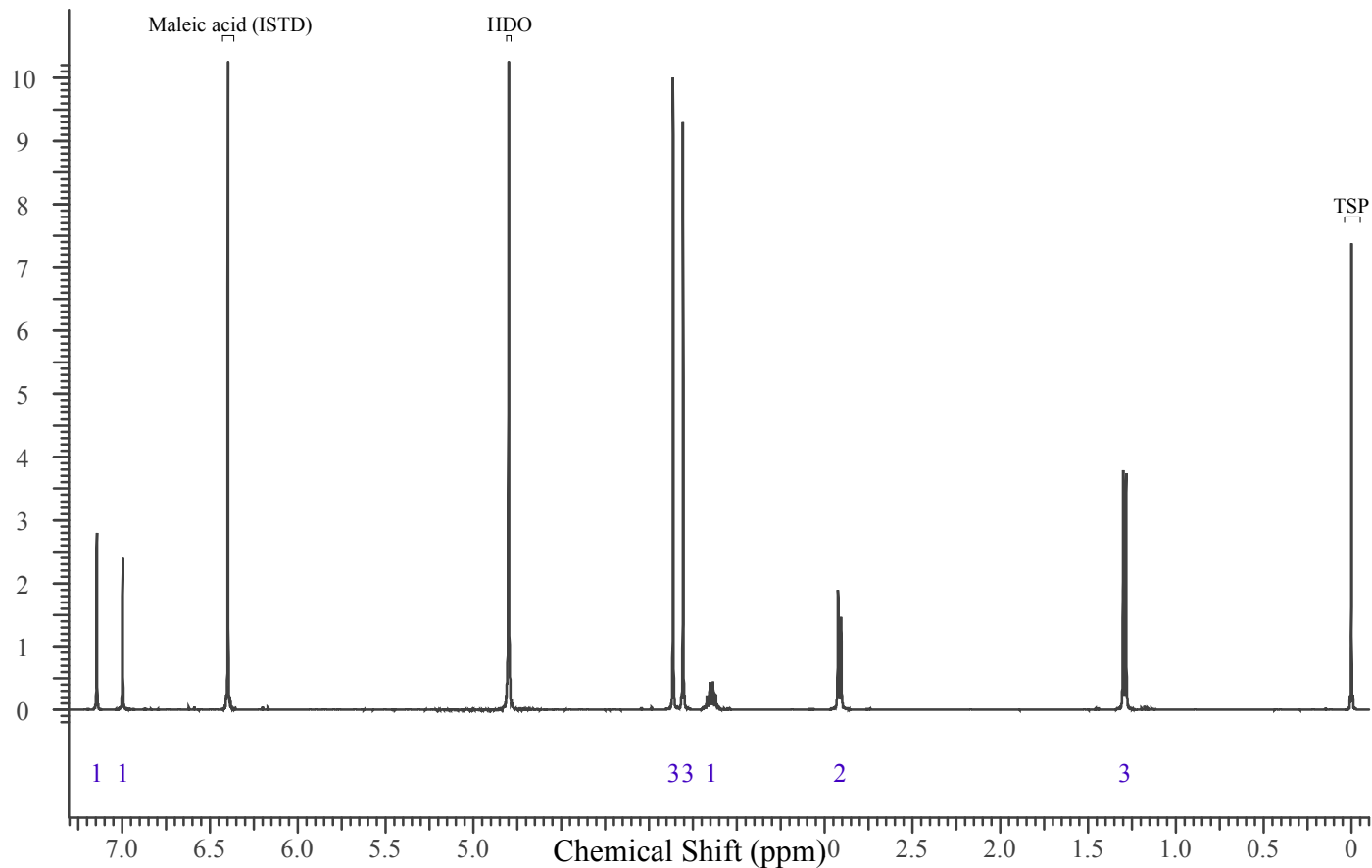
### 3. QUALITATIVE DATA

#### 3.1 NUCLEAR MAGNETIC RESONANCE

**Sample Preparation:** Dilute analyte to ~5 mg/mL in deuterium oxide (D<sub>2</sub>O) containing TSP for 0 ppm reference and maleic acid as quantitative internal standard.

**Instrument:** 400 MHz NMR spectrometer  
**Parameters:** Spectral width: at least containing -3 ppm through 13 ppm  
Pulse angle: 90°  
Delay between pulses: 45 seconds

<sup>1</sup>H NMR: 4-Chloro-2,5-dimethoxyamphetamine HCl; Lot MP193-194; D<sub>2</sub>O; 400 MHz





## 4-Chloro-2,5-Dimethoxyamphetamine

The Drug Enforcement Administration's Special Testing and Research Laboratory generated this monograph using structurally confirmed reference material.



### 3.2 Gas Chromatography/Mass Spectrometry

**Sample Preparation:** Dilute analyte ~ 4 mg/mL base extracted into chloroform

**Instrument:** Agilent gas chromatograph operated in split mode with MS detector

**Column:** DB-1 MS (or equivalent); 30m x 0.25 mm x 0.25  $\mu$ m

**Carrier Gas:** Helium at 1 mL/min

**Temperatures:** Injector: 280°C  
MSD transfer line: 280°C

MS Source: 230°C

MS Quad: 150°C

Oven program:

1) 100°C initial temperature for 1.0 min

2) Ramp to 300°C at 12 °C/min

3) Hold final temperature for 9.0 min

**Injection Parameters:** Split Ratio = 25:1, 1  $\mu$ L injected

**MS Parameters:** Mass scan range: 34-550 amu

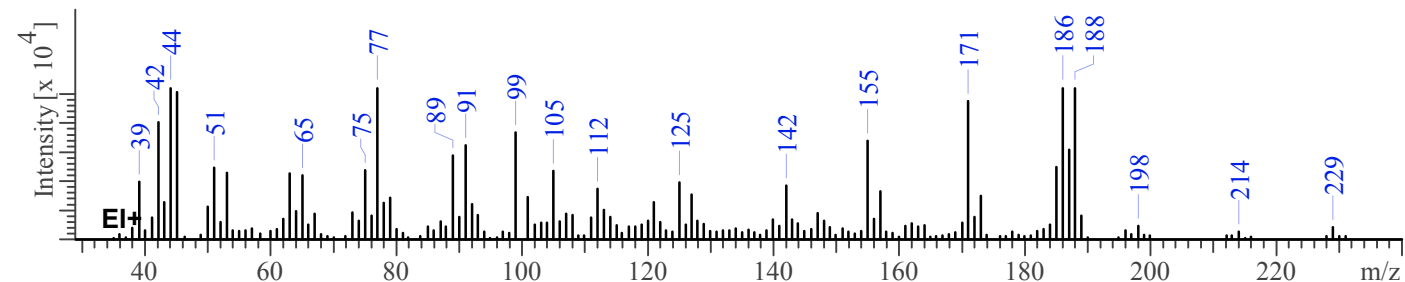
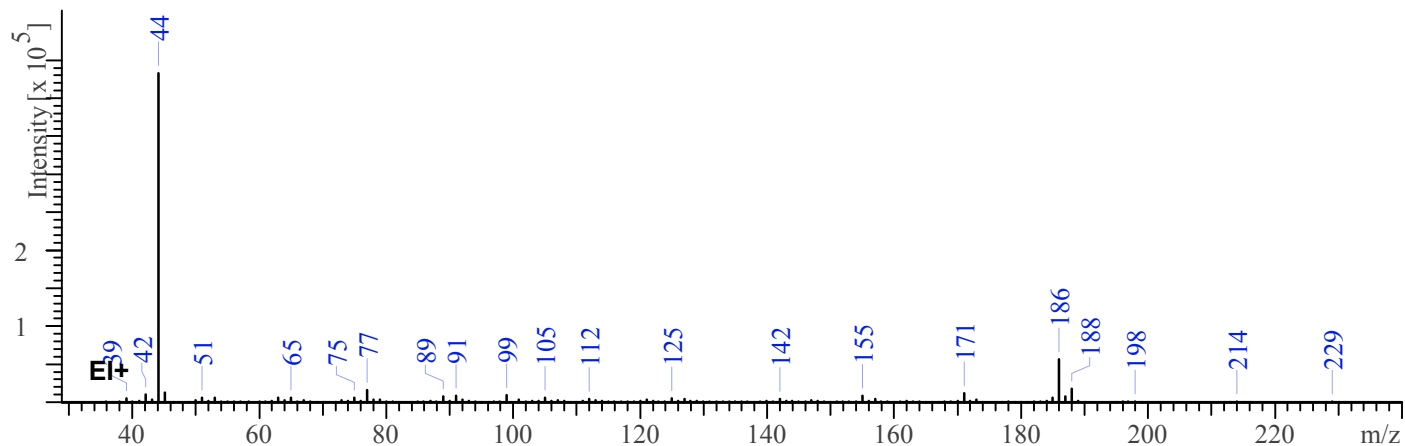
Threshold: 100

Tune file: stune.u

Acquisition mode: scan

**Retention Time:** 9.420 min

EI Mass Spectrum: 4-Chloro-2,5-dimethoxyamphetamine HCl; Lot MP193-194





# 4-Chloro-2,5-Dimethoxyamphetamine

The Drug Enforcement Administration's Special Testing and Research Laboratory generated this monograph using structurally confirmed reference material.

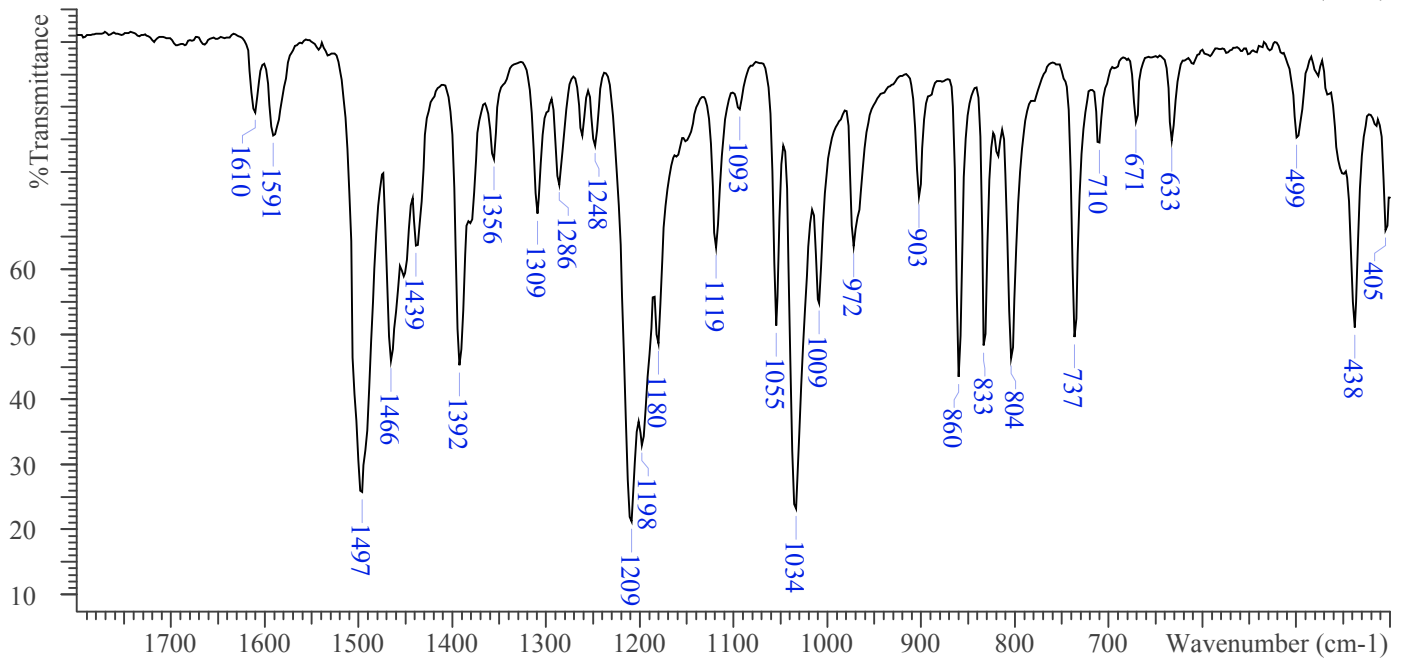
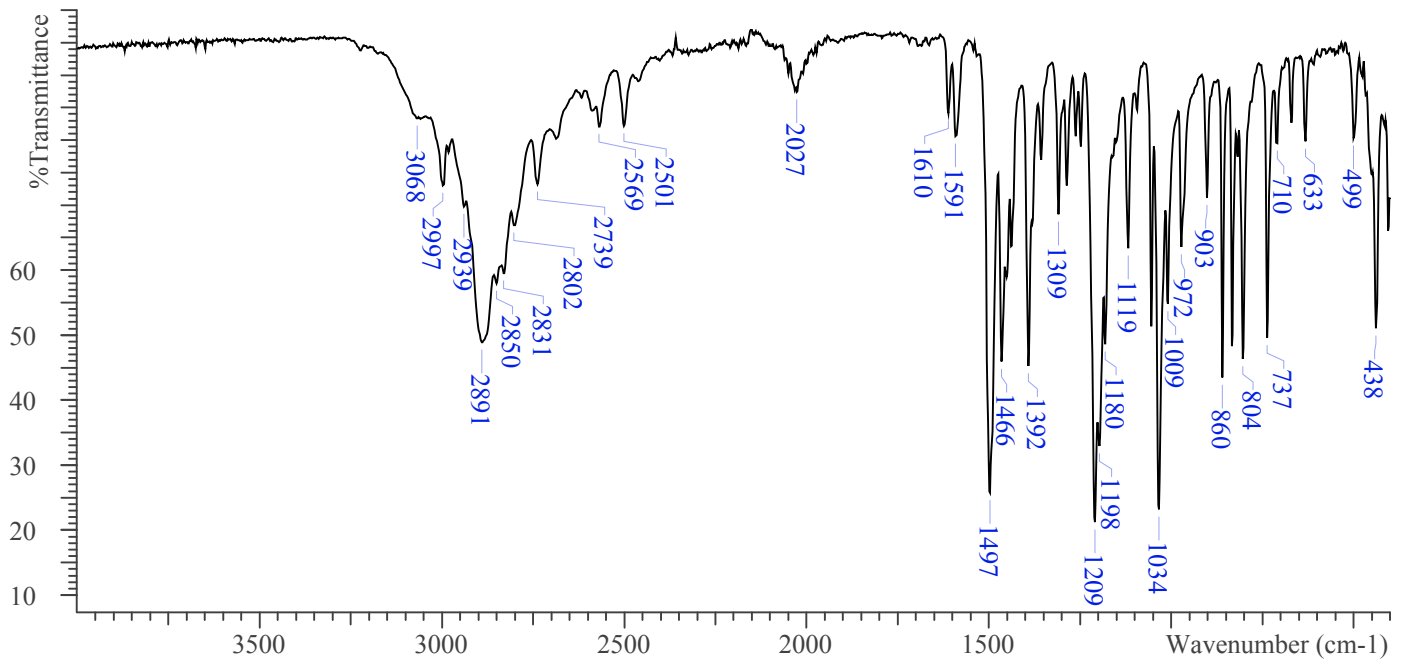


## 3.3 INFRARED SPECTROSCOPY (FTIR)

**Instrument:** FTIR with diamond ATR attachment (3 bounce)

**Scan Parameters:**  
Number of scans: 32  
Number of background scans: 32  
Resolution: 4 cm<sup>-1</sup>  
Sample gain: 8  
Aperture: 150

FTIR ATR (Diamond, 3 Bounce): 4-Chloro-2,5-dimethoxyamphetamine HCl; Lot MP193-194





## 4-Chloro-2,5-Dimethoxyamphetamine

*The Drug Enforcement Administration's Special Testing and Research Laboratory generated this monograph using structurally confirmed reference material.*



### 4. **ADDITIONAL RESOURCES**

[Forendex](#)

[Wikipedia](#)