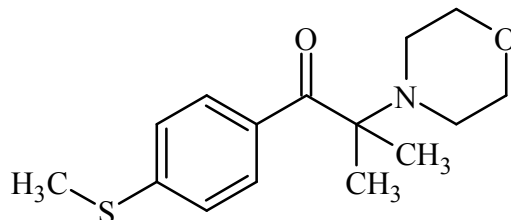




## 2-Methyl-4'-(methylthio)-2-morpholinopropiophenone

The Drug Enforcement Administration's Special Testing and Research Laboratory generated this monograph using structurally confirmed reference material.



### 1. GENERAL INFORMATION

<b>IUPAC Name:</b>	2-Methyl-1-(4-(methylthio)phenyl)-2-morpholinopropiophenone
<b>CAS#:</b>	71868-10-5
<b>Synonyms:</b>	MMMP, MTMP, Caccure 907
<b>Source:</b>	DEA Reference Material Collection
<b>Appearance:</b>	White powder
<b>UV<sub>max</sub>(nm):</b>	Not Determined

### 2. CHEMICAL AND PHYSICAL DATA

#### 2.1 CHEMICAL DATA

Form	Chemical Formula	Molecular Weight	Melting Point (°C)
Base	C <sub>15</sub> H <sub>21</sub> NO <sub>2</sub> S	279.40	Not Determined





## 2-Methyl-4'-(methylthio)-2-morpholinopropiophenone

The Drug Enforcement Administration's Special Testing and Research Laboratory generated this monograph using structurally confirmed reference material.



### 3.2 GAS CHROMATOGRAPHY/MASS SPECTROMETRY

**Sample Preparation:** Dilute analyte ~4 mg/mL in chloroform base extracted with sodium carbonate.

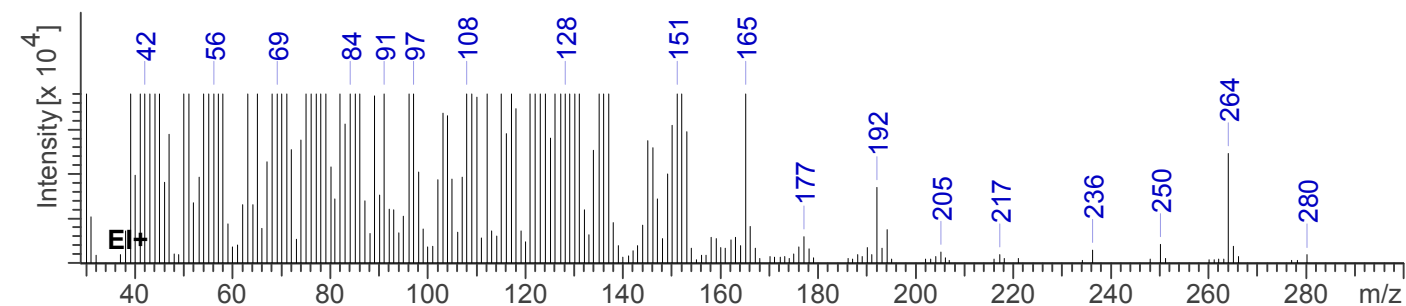
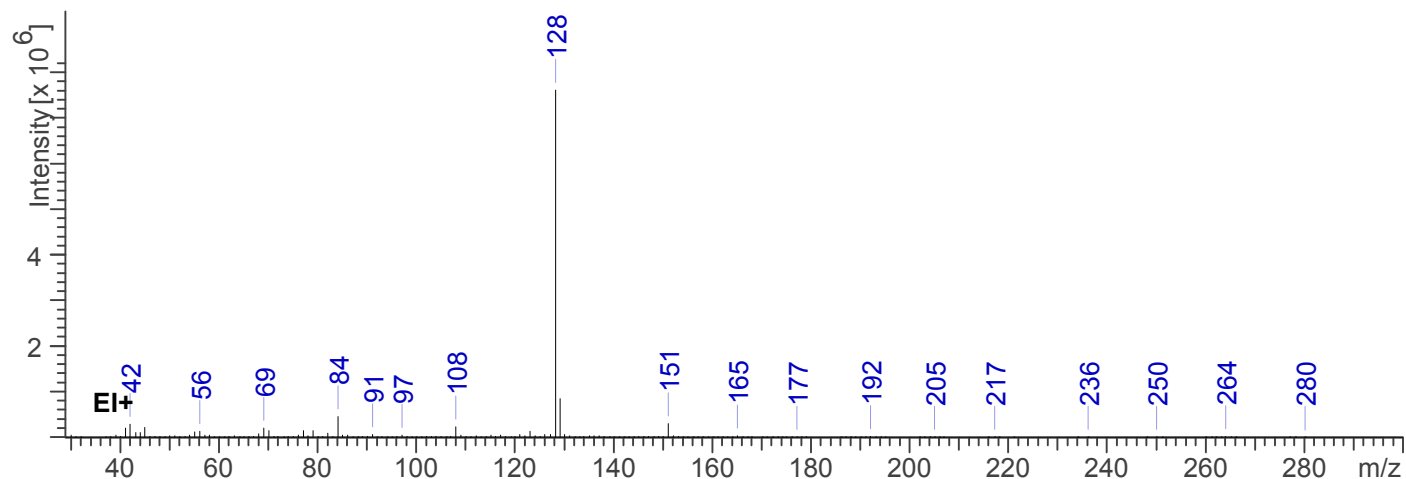
**Instrument:** Agilent gas chromatograph operated in split mode with MS detector  
**Column:** HP-5 MS (or equivalent); 30m x 0.25 mm x 0.25  $\mu$ m  
**Carrier Gas:** Helium at 1.5 mL/min  
**Temperatures:** Injector: 280°C  
MSD transfer line: 280°C  
MS Source: 230°C  
MS Quad: 150°C  
Oven program:  
1) 100°C initial temperature for 1.0 min  
2) Ramp to 280°C at 12 °C/min  
3) Hold final temperature for 9.0 min

**Injection Parameters:** Split Ratio = 25:1, 1  $\mu$ L injected

**MS Parameters:** Mass scan range: 30-550 amu  
Threshold: 100  
Tune file: stune.u  
Acquisition mode: scan

**Retention Time:** 13.571 min

EI Mass Spectrum: 2-Methyl-4'-(methylthio)-2-morpholinopropiophenone, Lot X4MPL-KH







## 2-Methyl-4'-(methylthio)-2-morpholinopropiophenone

*The Drug Enforcement Administration's Special Testing and Research Laboratory generated this monograph using structurally confirmed reference material.*



### 4. ADDITIONAL RESOURCES

*No Literature available as of 11/1/2017*