







# Bupropion

The Drug Enforcement Administration's Special Testing and Research Laboratory generated this monograph using structurally confirmed reference material.



## 3.2 GAS CHROMATOGRAPHY/MASS SPECTROMETRY

**Sample Preparation:** Dilute analyte ~4 mg/mL in MeOH

**Instrument:** Agilent gas chromatograph operated in split mode with MS detector

**Column:** DB-1 MS (or equivalent); 30m x 0.25 mm x 0.25  $\mu$ m

**Carrier Gas:** Helium at 1.5 mL/min

**Temperatures:** Injector: 280°C                      MSD transfer line: 280°C

MS Source: 230°C                      MS Quad: 150°C

Oven program:

1) 100°C initial temperature for 1.0 min

2) Ramp to 280°C at 12 °C/min

3) Hold final temperature for 9.0 min

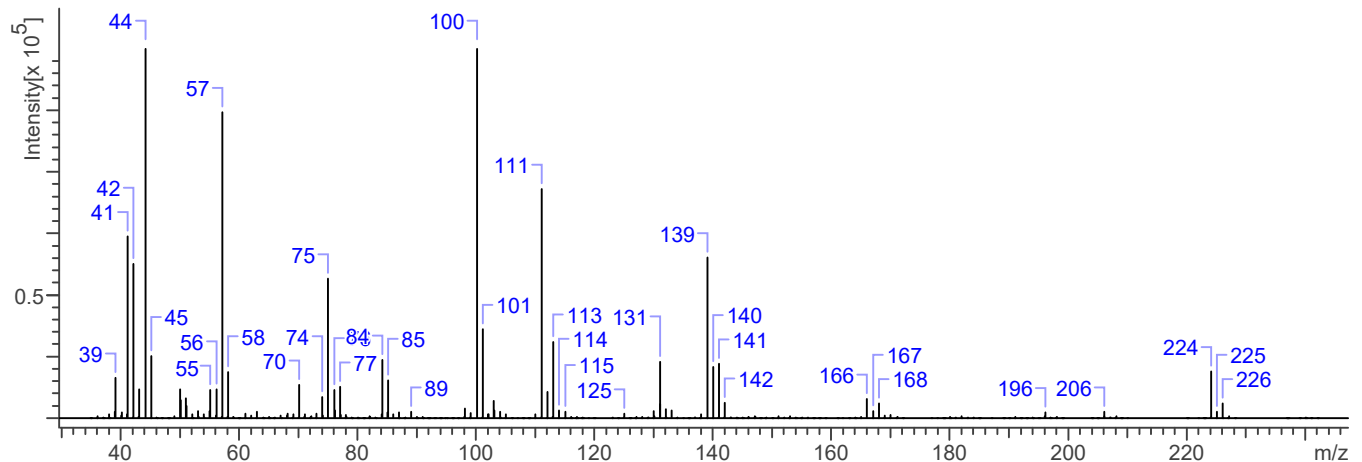
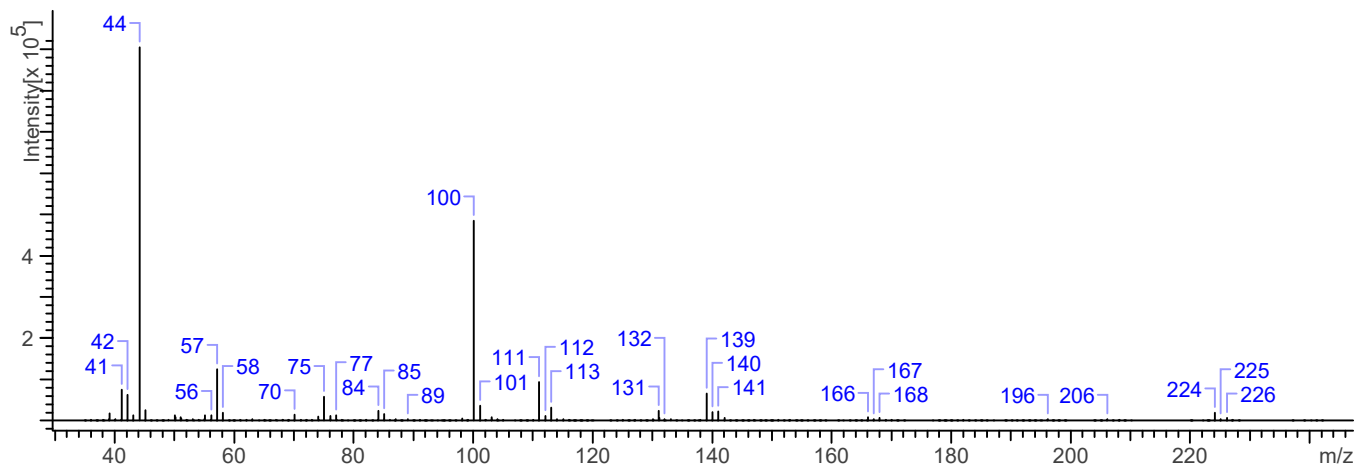
**Injection Parameters:** Split Ratio = 25:1, 1  $\mu$ L injected

**MS Parameters:** Mass scan range: 30-550 amu                      Threshold: 100

Tune file: stune.u                      Acquisition mode: scan

**Retention Time:** 8.748 min

EI Mass Spectrum: Bupropion HCl; Lot# 0421509-4





# Bupropion

The Drug Enforcement Administration's Special Testing and Research Laboratory generated this monograph using structurally confirmed reference material.

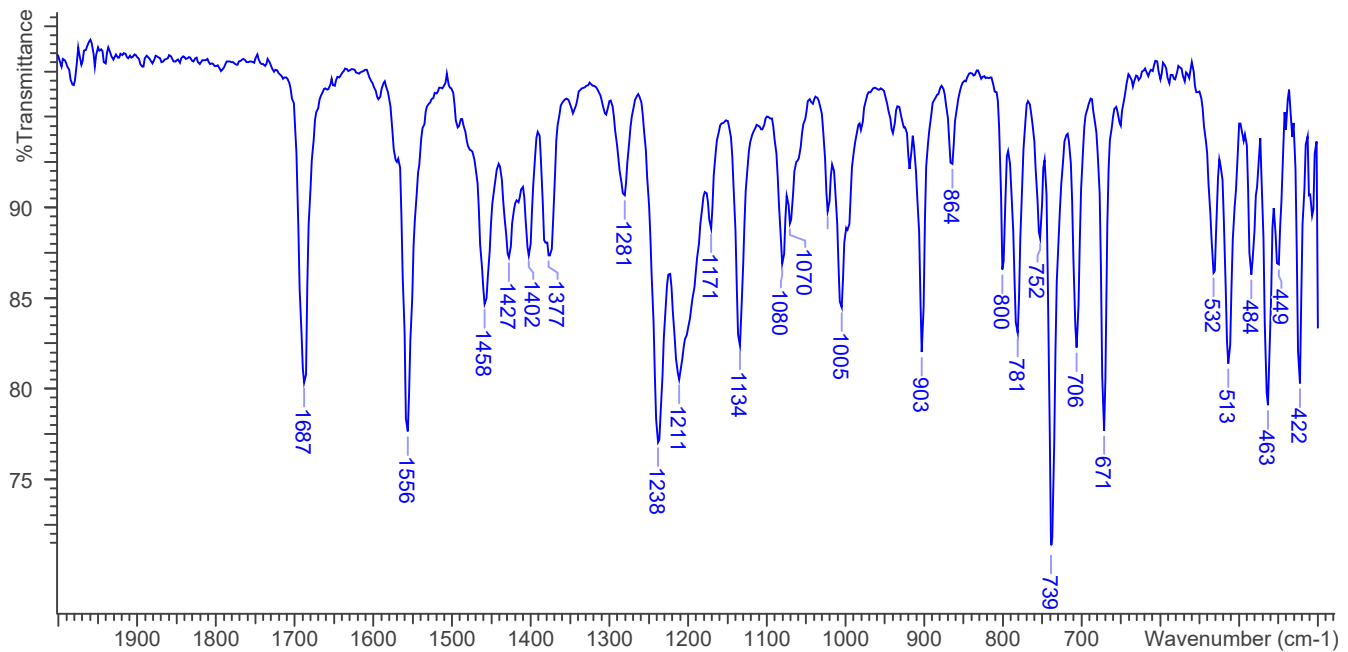
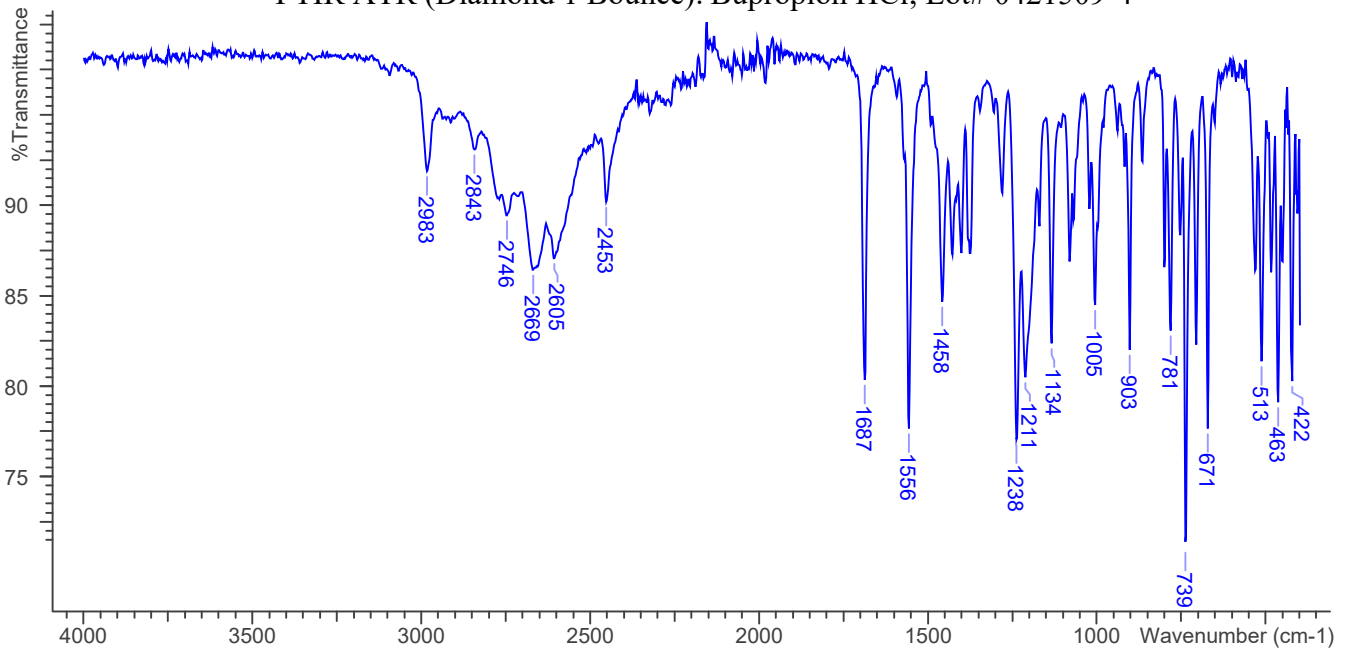


## 3.3 INFRARED SPECTROSCOPY (FTIR)

**Instrument:** FTIR with diamond ATR attachment (1 bounce)

**Scan Parameters:**  
Number of scans: 32  
Number of background scans: 32  
Resolution: 4 cm<sup>-1</sup>  
Sample gain: 8  
Aperture: 150

FTIR ATR (Diamond 1 Bounce): Bupropion HCl; Lot# 0421509-4





## Bupropion

*The Drug Enforcement Administration's Special Testing and Research Laboratory generated this monograph using structurally confirmed reference material.*



### 4. ADDITIONAL RESOURCES

[\*Wikipedia\*](#)