







## 4-Chloromethcathinone

The Drug Enforcement Administration's Special Testing and Research Laboratory generated this monograph using structurally confirmed reference material.



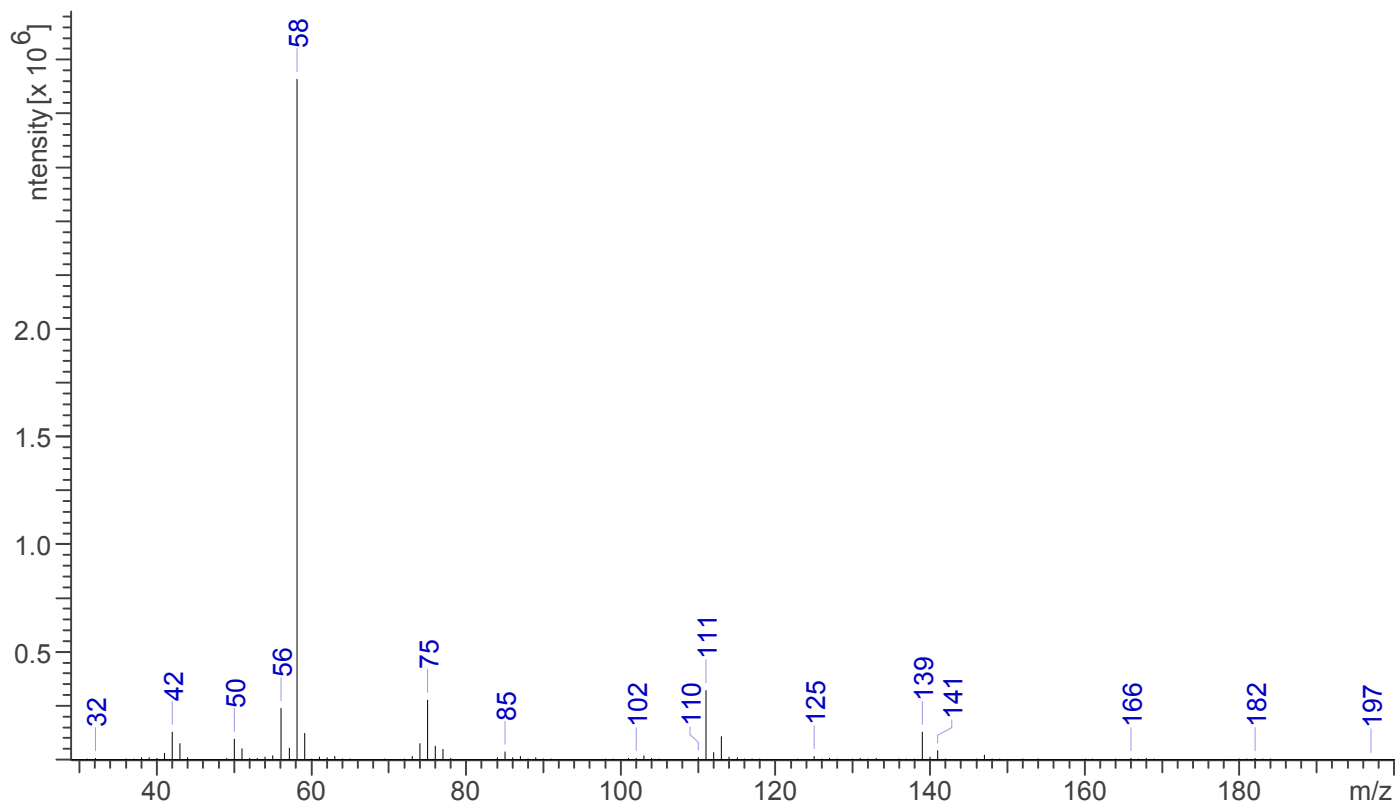
### 3.2 GAS CHROMATOGRAPHY/MASS SPECTROMETRY

**Sample Preparation:** Dilute analyte ~3 mg/mL in 1:1 CHCl<sub>3</sub>:MeOH.

**Instrument:** Agilent gas chromatograph operated in split mode with MS detector  
**Column:** DB-5 MS (or equivalent); 30m x 0.25 mm x 0.25 μm  
**Carrier Gas:** Helium at 1 mL/min  
**Temperatures:** Injector: 280°C  
MSD transfer line: 280°C  
MS Source: 230°C  
MS Quad: 150°C  
Oven program:  
1) 100°C initial temperature for 1.0 min  
2) Ramp to 280°C at 12 °C/min  
3) Hold final temperature for 9.0 min

**Injection Parameters:** Split Ratio = 25:1, 1 μL injected  
**MS Parameters:** Mass scan range: 30-550 amu  
Threshold: 100  
Tune file: stune.u  
Acquisition mode: scan  
**Retention Time:** 7.313 min

EI Mass Spectrum: 4-Chloromethcathinone HCl Lot 0465311-20





## 4-Chloromethcathinone

The Drug Enforcement Administration's Special Testing and Research Laboratory generated this monograph using structurally confirmed reference material.

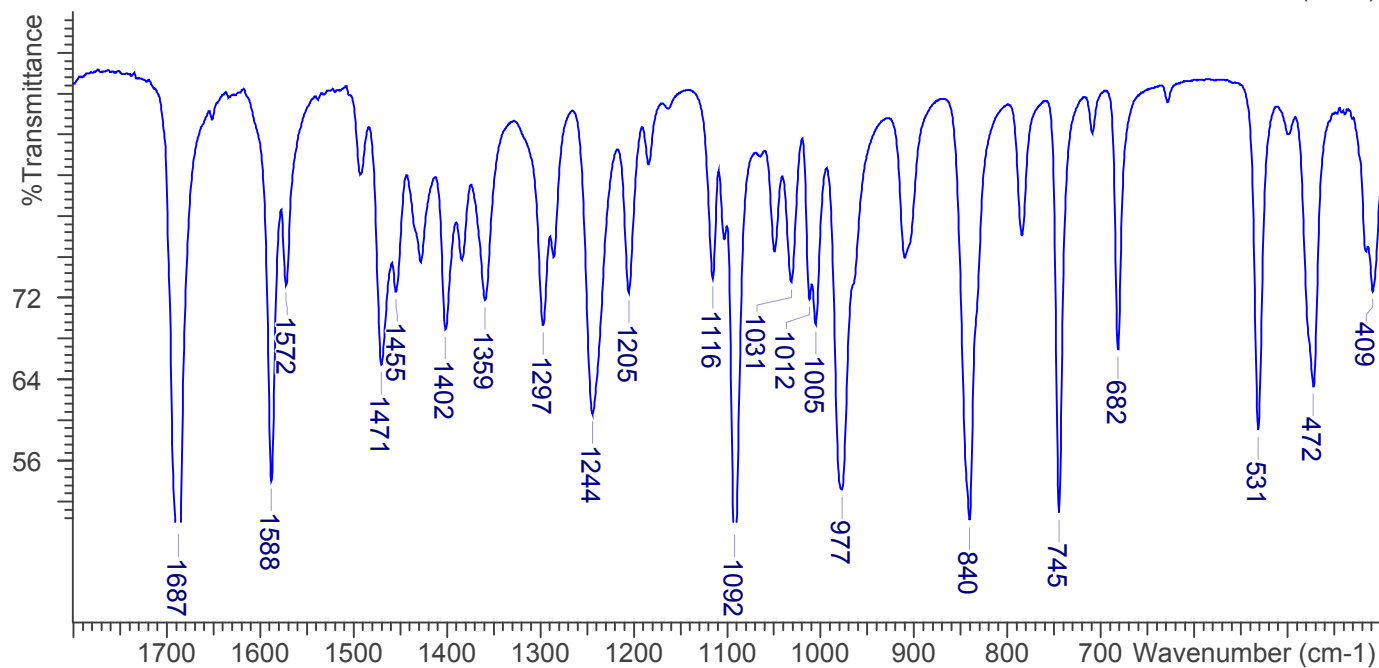
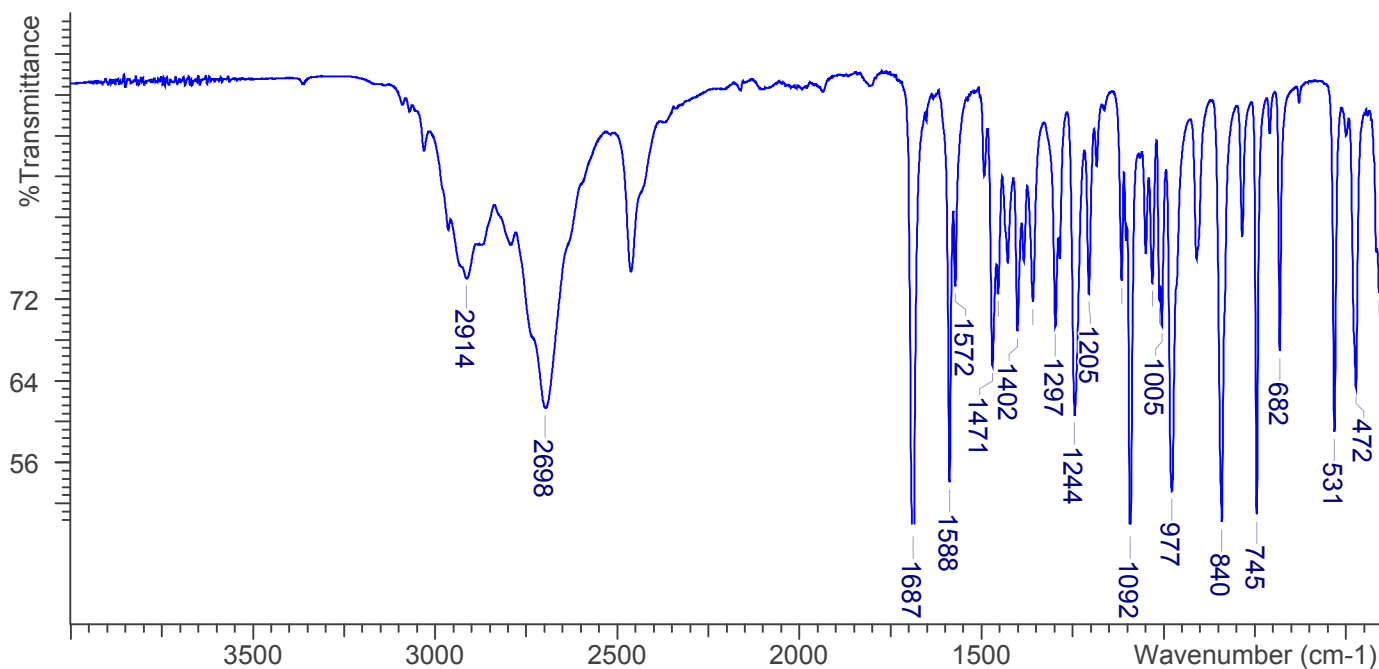


### 3.3 INFRARED SPECTROSCOPY (FTIR)

**Instrument:** FTIR with diamond ATR attachment (1 Bounce)

**Scan Parameters:**  
Number of scans: 32  
Number of background scans: 32  
Resolution: 4 cm<sup>-1</sup>  
Sample gain: 4  
Aperture: 80

FTIR ATR (Diamond, 1 Bounce): 4-Chloromethcathinone HCl Lot 0465311-20





## 4-Chloromethcathinone

*The Drug Enforcement Administration's Special Testing and Research Laboratory generated this monograph using structurally confirmed reference material.*



### 4. ADDITIONAL RESOURCES

[Wikipedia](#)